



## PRODUCT SHEET

# TNSOnline: Monitoring and visibility for your connectivity



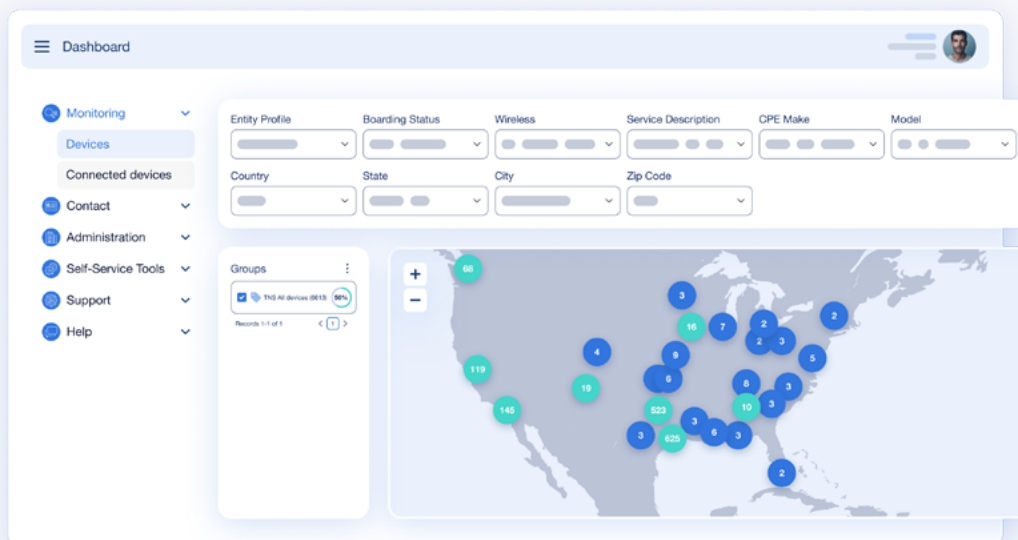
TNSOnline is a monitoring and troubleshooting portal, designed to provide seamless visibility and control over your connectivity services. With an intuitive, modern interface, TNSOnline provides real-time 24/7 reporting into device performance, connectivity, performance and data usage, empowering your business with the visibility and insights needed to make accurate and informed decisions.

## Transforming Operational Efficiency and Visibility

As businesses face challenges like fragmented visibility, operational inefficiencies, and limited reporting capabilities, TNSOnline empowers you with the tools to take charge of your network and services.

## Device monitoring and health

Complete visibility into your entire device fleet. Whether you're tracking device location, status, temperature, CPU usage, or company information, you'll have everything you need to monitor performance and ensure operational health.



### Monitor device status

See operational status, device uptime history, alerts, temperature, memory and CPU usage, and more.



### Organize devices

Tag and group devices for streamlined access and management.



### Track device location

Visualize your devices on a map or grid for easy access and contextual visibility.



### Real-time health insights

Get immediate updates on your sites' performance metrics to make informed decisions.

## Data usage and SIM management

Monitor your SIM signal performance, data usage and predict potential overages, ensuring your network remains within budget and runs smoothly.



### Track data usage

Monitor total data consumption, including received and transmitted bytes.



### Cellular signal insights

View detailed reports on signal strength and network performance to optimize connectivity.



### Predictive overage alerts

Receive warnings when you're about to exceed your data plan, helping you avoid unexpected charges.



## Troubleshooting and network diagnostics

When a network issue is detected, TNSOnline offers advanced troubleshooting tools to quickly diagnose and resolve problems, keeping your network running at peak performance.

### Run diagnostics

Use DNS lookups, ping tests, and TCP/IP packet captures to troubleshoot network issues.

### Monitor active connections

Track and monitor active connections to identify potential issues or bottlenecks.



## API access management

TNSOnline offers API access to leverage monitoring data and alerts into customer-owned systems. Easily manage API access with TNSOnline's flexible integration capabilities. Control when and how APIs are accessed, ensuring maximum security and flexibility for your system integrations.

### Manage API access

Enable or disable API access as needed for seamless system integration.

### Instant key regeneration

Reset API keys instantly to maintain secure and flexible access control.



## Device onboarding and replacement

Simplify the process of onboarding new devices and replacing existing ones. With automatic tests and seamless configuration transfers, device management becomes quick and efficient.

### Device provisioning

Onboard new devices with ease, automatically testing for wireless connectivity and VPN health.

### Device replacement

Swap devices quickly and transfer all configurations with just a couple of clicks, minimizing downtime



## User Security

Ensure secure access to TNSOnline with multi-factor authentication (MFA), supporting both SMS and Time-Based One-Time Password (TOTP) authentication for user logins. This added layer of security helps protect your account from unauthorized access.

