

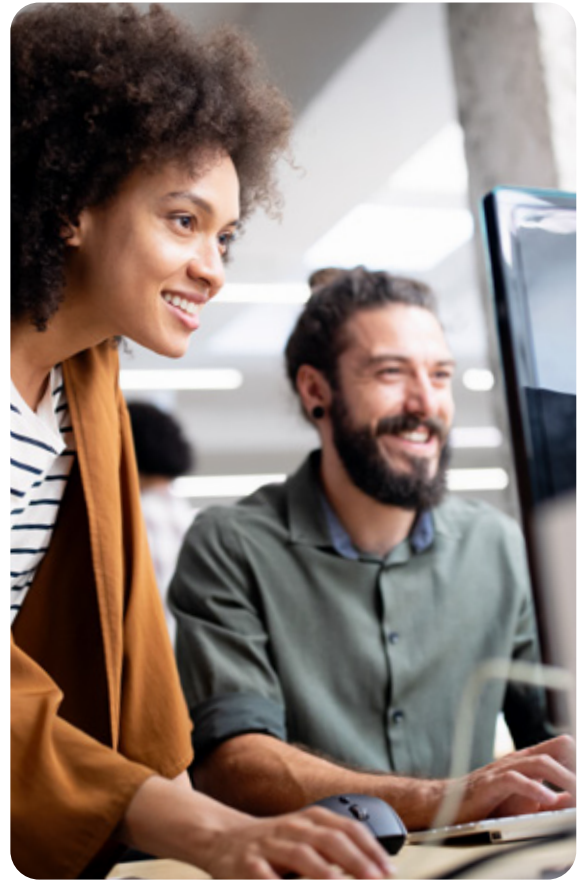


PRODUCT SHEET

TNS Application Development Environment (ADE)

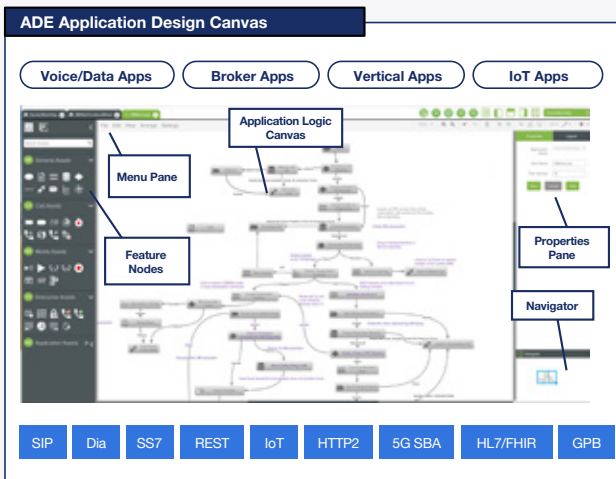
As communications service providers (CSPs) transform their networks, they are challenged with transitioning their legacy voice applications as they evolve their network. They also desire to offer unique applications in a quick and cost-effective manner across multi-core networks.

TNS' Application Development Environment (ADE) is an application creation and customization engine that enables CSPs to create technology agnostic applications without exhaustive software programming and vendor dependence. Through the use of the web-based, user-friendly, drop-and-drag capabilities of ADE, applications can be delivered swiftly and reliably across a wide variety of networks including IMS, VoIP, VoLTE, VoWiFi, IN, GSM, CDMA, and converged TDM/IP. ADE is ideal for addressing these challenges and enabling new revenue streams.



Product Highlights

- Drag-and-drop based user-friendly GUI for building application logic
- Multiuser and multilingual interface for developing applications
- Expandable feature nodes library and reusable templates for quick application development
- Deployment manager utility for installing and managing applications
- API creation framework for service provisioning and external DB integration
- Application testing framework with embedded next-generation intelligent network (NGIN) platform for real-time application testing



- User-friendly interface that supports hassle-free application development environment
- Create, debug and package the application .sar file
- Deploy the application .sar file on the remote CAS platform
- Create database schema
- Supports application management tasks such as deploy, activate, deactivate and undeploy
- Provides seamless integration with TNS SPS REST APIs



Feature Nodes Library

ADE has an extensible framework to add feature nodes and making it available for application development. Existing feature nodes are categorized in general, call routing, media and enterprise (shown below). New feature nodes are continuously added in each new ADE release expanding the scope of application development while keeping pace with the industry.



General

- Start
- CDR
- Assignment
- DB query
- Condition
- Expression
- External call
- Switch
- Process



Call Routing

- Route call
- Terminate
- Event handler
- Create timer
- Stop timer
- Call hold
- Resync
- Dial-out



Media

- Play
- Play and collect
- Conference
- Record
- Stop media



Enterprise

- TDR
- ODR
- Account code
- Block
- Screening
- ACD
- Dial pattern
- Send alarm

ADE provides unique abilities for CSPs to quickly and cost effectively develop new applications, test them in the market and deploy to their installed base of customers. TNS' ADE key features make it the best application development environments available in the market.

Key Features

- Builds converged applications
- Hides complexity through protocol handler
- Supports multiple networks – legacy, NGIN and IMS
- Supports multiple protocols – INAP, CAMEL, MAP, AIN, SIP, ISC, HTTP, WebSocket, Diameter and SMPP
- Supports XML export and import of application business flows
- Supports functional block breakdown of large/complex flows
- Saves trees as reusable templates
- Contains hooks for external Java libraries
- Supports SOAP or Rest APIs for external DB integration
- Supports application tree validation
- Support for local and global variables
- Allows user configurable node labels
- Prints application logic tree

Find out how TNS can help you with a wide range of telecom solutions:

solutions@tnsi.com
tnsi.com

USA **+1 703 453 8300**
Europe **+44 (0)114 292 0200**
Asia Pacific **+61 2 9959 0800**